

STAR - fone

NOTE: Owners manual not to be removed by anyone but the occupant.

Owners Manual

***FBI Fire Burglary
Instruments, Inc.***

A Subsidiary of Pittway Corp.
163 Eileen Way, Syosset, NY 11791

FI2557 REV. 4/93
©1990 FBX

STAR-fone Table of Contents

INTRODUCTION	2
1. KEYPAD OPERATION	3
1.1 Keypad Layout	3
1.2 Arming the System	5
1.3 Disarming	6
1.4 Stay	7
1.5 Instant	7
1.6 Instant-Stay	8
1.7 Bypass	8
1.8 Unbypass	9
1.9 User Definition	9
1.10 User Deletion	9
1.11 Keypad Panic	10
1.12 Duress	10

2 TELEPHONE ACCESS	
2.1 General Information	11
2.2 Status Report	11
2.3 Arming the System	11
2.4 Stay	12
2.5 Instant	12
2.6 Instant-Stay	13
2.7 Disarm	13
2.8 Bypass	13
2.9 Unbypass	14
2.10 Panic	14
2.11 Duress	14
2.12 Aux. Relay Functions	15
2.13 Check Relay Status	15
2.14 Internal Access	15
2.15 External Access	16
2.16 Convenience Switch	16
2.17 Answering Machine	17
2.18 Listen-In	17
2.19 If an alarm Occurs	17
2.20 System Messages	19
2.21 User Programming	20
2.22 Deleting a User	20

3. INSTALLATION LAYOUT 21

4. SYSTEM TESTING	21
Homeowners Information	23
Summary - Keypad Operation	25
Summary - Telephone Access	26

INTRODUCTION

Congratulations on your decision to protect your home or business with the STAR-fone™ security system. The system has been designed with reliability and ease of operation in mind.

The "brain" of your new security system is the STAR-fone™ Control Panel. All of the detection devices have been wired to the control panel. Whenever a violation occurs, the control panel reacts. It may cause a siren to sound, transmit a coded signal to the central station, activate lights or messages on the keypad, or send a spoken message to you through your touch tone telephone.

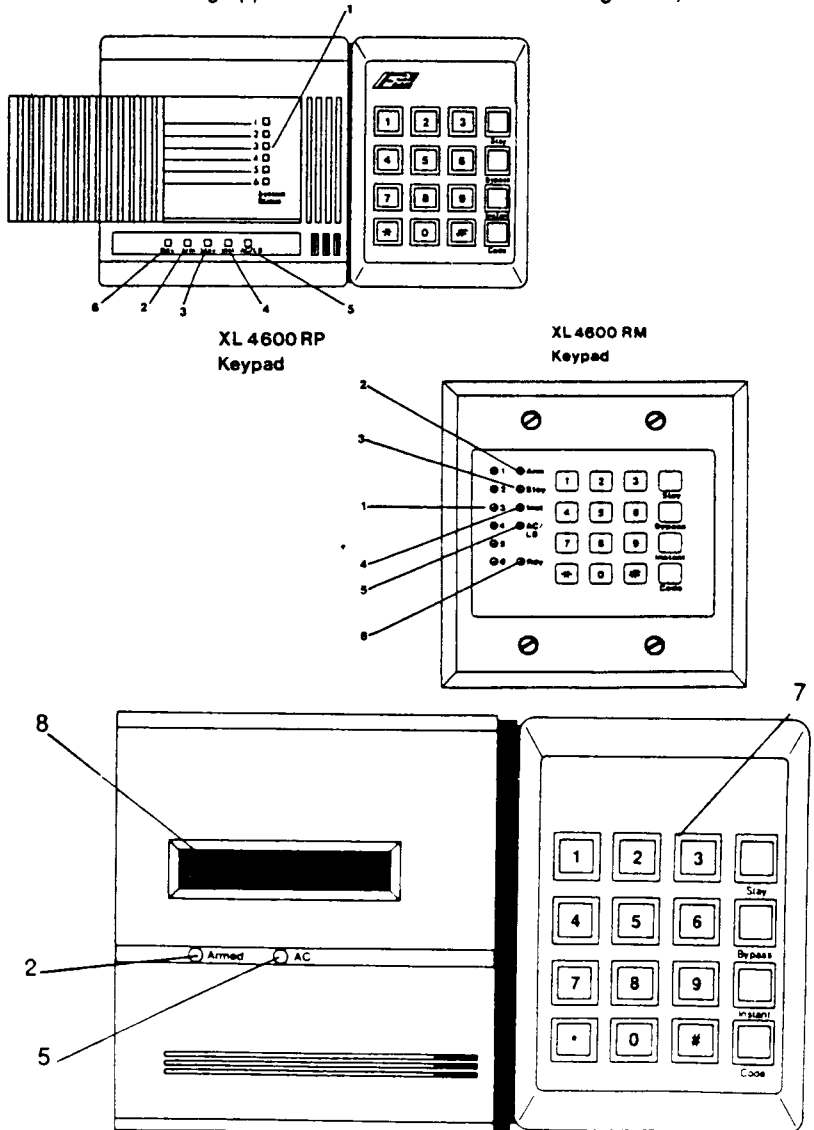
The Star-fone™ security system can be operated through keypads or through a touch tone telephone (either on premise, or off premise). The STAR-fone™ converts any touch tone telephone into "the voice of your security system". It interprets the control panels signals into actual English language messages through the telephone receiver, and with the push buttons on your phone, you can dial your instructions to the control panel: Turn on/Turn off, Bypass zones etc.

Since each STAR-fone™ security system is professionally installed and customized to meet your particular security needs, your system may not provide some of the features described in this manual. Your alarm installer will identify those features that have been incorporated into your system. In addition, a video tape users guide is available. Consult your installer for more information.

1. KEYPAD OPERATION

1.1 KEYPAD LAYOUT

The STAR-fone can be operated by touch tone telephone or keypads. The keypad is the arming station for the STAR-fone. Three different versions are available, a metal plate flush mounted version (XL4600RM), a plastic cased surface mount version, and an LCD (liquid crystal display) version containing a two line readout. The keypads have the following appearance and contain the following items;



XL 4600 RP
Keypad

XL 4600 RM
Keypad

1) **ZONE STATUS INDICATORS** - displays the current zone status as follows;

ALARM	Fast blinking.
BYPASS	Slow blinking low intensity.
TROUBLE	Slow pulse
NOT READY	Solid ON

2) **ARM/DISARM INDICATOR** - Shows whether the system is currently armed (ON) or disarmed (OFF).

3) **STAY** - shows the system has been armed with the interior zones bypassed.

4) **INSTANT** - shows whether the system has been ARMED with all delay zones instant.

5) **AC/LOW BATTERY** - shows whether the system is running on AC (ON) or backup battery (OFF).

6) **READY** Indicates whether the system is ready for arming.

7) **NUMERICAL KEYPAD** operates in a similar manner to a calculator or telephone with the digits 0 - 9 and * # clearly marked.

8) **DISPLAY AREA** - This section of the LCD keypad displays the current system status in this two line by sixteen character display.

Throughout this portion of the users manual the following conventions are used to display the keystrokes required to perform the functions from the keypads:

BYPASS	Key labeled BYPASS on keypad.
INSTANT	Key labeled INSTANT on keypad.
STAY	Key labeled STAY on keypad.
CODE	Key labeled CODE on keypad
[USER]	Four digit user code.

1.2 ARMING THE SYSTEM

ARMING the system will activate all portions of your Security System. Arming can only be performed if all zones are READY. For example, if a protected door is open the system cannot be armed.

SYSTEM READY

The system is ready to be armed if the READY indicator light ON. On LCD keypads the following display will appear:

SYSTEM READY

If the system is ready, ARMING can be performed as follows;

ARMING PROCEDURE:

1. Enter your four digit user code into the keypad:

[USER]

The ARMED indicator light will now be lit and if you are leaving the home you may exit through a door designated by your installer as an exit/entry zone for a fixed time period known as the exit delay. The entry exit times for your system are as follows;

ENTRY: _____ seconds- EXIT: _____ seconds

LCD keypads will display the following message;

ON AWAY

NOTE: The system can be armed without the backup battery being connected.

SYSTEM NOT READY

If the system is not ready to be armed the READY indicator will be OFF. On LED based keypads the zone indicator lights will display the zones which are currently not ready. The condition of each zone indicator reflects what the status of each zone as follows;

ALARM	Fast blinking.
BYPASS	Slow blinking low intensity.
TROUBLE	Slow pulse
NOT READY	Solid ON

The LCD keypad will display zones which are not ready with a SYSTEM NOT READY message on the first line and the zone(s) that are not ready on the second line as shown below;

SYSTEM NOT READY
ZONE: 1 3 6

In the example above, zones 1 3 and 6 are not ready.

In order to make the system ready determine which zones are not ready by observing the zone indicator lights, or the display section of the LCD keypad. From the zone number you can find out which area of protection is not ready.

For example, assume the zone 3 is not ready. Typically this might mean that a protected door or window is open.

>> Once the problems with each zone has been resolved the READY light will appear and the system can be armed.

To ARM the system when the system is NOT READY one of the following actions are necessary;

- Make the zone(s) ready. Determine which zones are not ready and perform what is necessary to ready the zone(s) (example, close the door or window, etc.),or

- Bypass the zone(s) not ready. Bypassing should only be performed if the zone cannot be made ready or intentionally will remain not ready. Remember, zones that are bypassed are **not** protected when the system is armed.

1.3 DISARMING

Disarming the security system will deactivate the burglary portions of the system.

This procedure can also be used to reset your system if you accidentally set off the system (example, opened a window while the system was armed, or excessive amount of smoke activated fire protection system).

DISARM PROCEDURE:

[USER]

Enter your user code.

IF NO ALARMS HAVE TAKEN PLACE

Upon disarming the ARMING indicator will go off.

The system display will reflect the current status. LCD keypads should display the SYSTEM READY display.

IF ALARMS HAVE TAKEN PLACE

If alarms or other conditions such as system troubles have taken place since the initial system arming, they will appear on the display. The conditions that have occurred appear in the zone display section of the keypad. LCD keypads will reflect the current system status through the indicator lights as follows;

ALARM	Fast blinking.
BYPASS	Slow blinking low intensity.
TROUBLE	Slow pulse
NOT READY	Solid ON

Burglary alarms will be indicated with a STEADY sound through the keypad while FIRE alarms will generate a pulsing sound.

LCD keypads will show the alarm conditions with a display as follows:

ALARM
ZONE:1 3 5

The second line of the display will show the zones which are in alarm. In the example above, zones 1 3 and 5 are in alarm. After entry of your user code the display will contain the following display;

ALARM MEM
ZONE: 1 3 5

If an intrusion has taken place while you were away, do not enter until the location has been secured!!!.

- >> To clear the display of the alarm or trouble conditions and silence the audible signal enter [USER] again.

1.4 STAY

The STAY mode is another way to ARM your system while you remain in the location. The STAY mode will deactivate any interior protection zones which means that you will be free to walk throughout your location without activating the alarm system.

In order to enter the STAY mode, the system must be READY. (see previous description).

STAY PROCEDURE:

STAY [USER]

Depress the STAY key followed by your user code.

After a successful STAY arming the ARMED indicator will be lit. In addition, on LED keypads the STAY indicator will be lit.

In LCD keypads the following display will appear;

ON: STAY

In the STAY mode only the external or perimeter burglary protection is active. You are free to walk around the residence without activating any of the interior protection zones.

- >> Remember, you must DISARM the system to when you want to leave the premise.

Note: The STAY option will automatically be reset after the system is disarmed.

1.5 INSTANT

The INSTANT mode arms the system and eliminates the entry time delay interval. This mode could be used if anyone enters through an entry/exit zone the alarm system will instantly activate.

The system must be ready to select the INSTANT option.

INSTANT PROCEDURE:

INSTANT [USER]

Depress the INSTANT key followed by your user code.

Upon successful INSTANT ARMING of the system the ARMED indicator will be lit. In addition, on LED keypads the Instant indicator will be ON.

LCD keypads will contain the following message;

ON:INSTANT

Note: The INSTANT option will automatically be reset after the system is disarmed.

1.6 INSTANT - STAY

The INSTANT STAY mode will arm the system with the characteristics of both the INSTANT and STAY modes. The system will be armed with the interior portions bypassed and the entry delay will be suspended.

The system must be READY in order to enter this mode.

PROCEDURE:

INSTANT STAY [USER]

or

STAY INSTANT [USER]

Depress the INSTANT and STAY keys in any order followed by your user code.

After a successful INSTANT STAY arming the ARMED indicator will be lit. In addition, on LED keypads both the INSTANT and STAY lights will be on.

LCD keypads will contain the following message;

ON:STAY INSTANT

1.7 BYPASS

Bypasses are performed to eliminate burglary zones that are not ready or faulty from activating the security system.

BYPASS PROCEDURE:

BYPASS [USER] ZN

Depress the BYPASS key followed by your user code and zone number (1-6) to be bypassed.

Example:

BYPASS [USER] 2 Will bypass zone 2.

If the zone has already been bypassed, the sequence will unbyypass the zone except if the system is armed and the unbyypassed zone is still not ready. Unbypass means that the zone returns as an active burglary zone.

After the bypass (or unbyypass) command has been accepted the unit will emit a continuous beep and zone or zones that have been bypassed will appear in a slow blinking mode in the zone status area on LED keypads.

LCD keypads will display the zone bypasses with the zones bypassed on the second line of the display as shown below. The top line can contain either the SYSTEM READY or NOT READY message.

SYSTEM READY
BYP: 1 3 5

In this example, zones 1 3 and 5 have been bypassed.

1.8 UNBYPASS

The UNBYPASS function removes an existing bypass from a currently bypassed zone. After UNBYPASSING a zone, the bypass indication will be removed for that zone on either the LCD or LED keypad.

The procedure is similar to a bypass.

UNBYPASS PROCEDURE:

BYPASS [USER] ZN

See bypass description.

1.9 USER DEFINITION

Users can be entered or modified directly through the keypad. The STAR XL-4600 security system can have up to six different users. User #1 is known as the master user and is the only user allowed to modify other users.

USER DEFINITION PROCEDURE:

CODE [USER] [US#] [USERID]

where;

[USER] Is the master user code (four digits).

[US#] User number (1-6)*

[USERID] New user ID (0000 - 9999).

Note: (*) If ambush code capability has been enabled by your installing company then user #6 will be used as the system ambush code.

Example,

To create user number 3, with a user access code of 4567 enter;

CODE [USER] 3 4567

Press the CODE key, the master user code, 3, then 4567 (new code).

- >> Any error detected during the USER definition process will cause the keypad to beep rapidly four times. If an error is detected retry the **entire** command.

1.10 USER DELETION

Removal of users from the panel can be performed as follows;

USER DELETION PROCEDURE:

CODE [USER] [User #] *

Where:

[USER] Master user code

[User #] Represents the user number being deleted.(2-6). Note: User number 1 cannot be deleted.

* is the * key from the keypad.

1.11 KEYPAD PANIC

A panic signal can be sent directly through the keypad by pressing the # and * keys at the same time. This panic signal can be set up to be silent or audible by your installing company. This panic signal is active 24 hours a day whether the system is armed or disarmed.

1.12 DURESS

The STAR -fone system has capability to send an emergency signal to the Central Station if you are forced to enter the premise. This ambush capability can be programmed by your installer. If active, then user code #6 will be your ambush code.

2. TELEPHONE ACCESS

2.1 GENERAL INFORMATION

This section of the users manual describes operation of the STAR-fone security system using a *touch tone* telephone. To operate the STAR-fone via telephone the following rules apply:

- always lift the receiver of the telephone, as if you were going to place a call; you will be able to turn your system on or off even if your telephone line is temporarily out of service (no dial tone).
- always press keys one at a time, in the sequence indicated
- if you make a mistake and push the wrong button, hang up and start over
- you must begin pressing the telephone keys within 10 seconds of lifting the receiver

2.2 STATUS REPORT (* *)

To check the status of your security system, lift the receiver and press * twice (*,*). Within 2 seconds the STAR-fone will tell you if the security system is on (ARMED) or off (DISARMED); if there are any doors or windows open; if there is a problem in the system etc. The messages are explained in the appropriate sections of this manual. You will receive a status report automatically each time you arm or disarm the system.

2.3 ARMING THE SYSTEM

To arm your Security System

1- Check status (*,*) to make sure that all protected openings are secured. You cannot arm the system with an "open loop" (open window, etc.).

STATUS MESSAGE: Example

THE SECURITY SYSTEM IS OFF
BACK DOOR IS NOT READY AND MUST BE CHECKED

In this case you must close the back door, or bypass that zone before you will be able to arm the system. Your system will report the zone descriptors programmed by your installer.

2- Once all protected openings are secured, check status (*,*) again.
STATUS MESSAGE:

THE SECURITY SYSTEM IS OFF

Now you can arm the system

Press * and your 4 digit user code. You should hear the tones as you press each key.

Listen for the confirmation message:

THE SECURITY SYSTEM IS ON
ALL DELAYS ARE ON

3- You now have a pre-set amount of time (exit delay time) to leave the premises through a door designated by your installer as the delay zone.

2.4 STAY (# 7)

The STAY mode is used to ARM your system while you remain in the location. The STAY mode will activate the security system with the exception of any interior protection zones, which means that you will be free to walk throughout your location without activating the alarm system. In order to arm in the stay mode, the system must be ready.

1- If the system is ready (after checking status) press # , 7, followed by your four digit user code.

EXAMPLE:

7 1 2 3 4 (assuming user code of 1234)

The system will respond:

THE SECURITY SYSTEM IS ON
ALL INTERIOR ZONES ARE OFF

2.5 INSTANT (# 8)

The INSTANT mode is used to ARM your system and eliminates the entry time delay. This mode could be used if you are staying within the premises, and no one is expected to return while the system is armed, you may want the system to report an alarm instantly if someone entered through the entry doors. In order to arm in the INSTANT mode, the system must be ready.

1- If the system is ready (after checking status) press # , 8, followed by your four digit user code.

EXAMPLE

8 1 2 3 4 (assuming user code of 1234)

The system will respond:

THE SECURITY SYSTEM IS ON
ALL DELAYS ARE OFF

2.6 INSTANT - STAY (# 9)

The INSTANT-STAY mode will ARM your system with the characteristics of both the INSTANT and STAY modes. The system will be armed with the interior portions bypassed and the entry delay will be suspended. In order to arm in the INSTANT-STAY mode, the system must be ready.

1- If the system is ready (after checking status) press #, 9, followed by your four digit user code.

EXAMPLE

9 1 2 3 4 (assuming user code of 1234)

The system will respond:

THE SECURITY SYSTEM IS ON
ALL INTERIOR ZONES ARE OFF
ALL DELAYS ARE OFF

2.7 DISARM

To disarm the security system:

Press * followed by your 4 digit user code

Listen for confirmation

THE SECURITY SYSTEM IS OFF

You will receive a complete System Status Report automatically each time you disarm the system.

2.8 BYPASS

Bypasses are used to eliminate burglary zones that are not ready or faulty from activating the security system. To bypass zones:

1- Make sure that the system is disarmed. Press (* *) for status:

THE SECURITY SYSTEM IS OFF

2- Press #, *, followed by your 4 digit user code and the zone number to be bypassed.

For example to bypass zone 3,

press # * 1 2 3 4 3 (assuming a user code of 1234)

3- Check Status (* *)

THE BACK DOOR IS BYPASSED

To bypass additional zones repeat steps 2 and 3.

NOTE: To maintain the security of the system, you will not receive a bypass message after the system has been armed.

NOTE: Bypassed zones are automatically reactivated after the system is disarmed.

2.9 UNBYPASS

The UNBYPASS function removes an existing bypass from a currently bypassed zone. To unbypass a single zone.

1- First make sure that the system is disarmed and that the zone is bypassed: Press (*, *) for status:

THE SECURITY SYSTEM IS OFF
THE BACK DOOR IS BYPASSED

2- Press #, *, followed by your 4 digit user code and the zone to be unbypassed.

For example, to unbypass zone 3, press # * 1 2 3 4 3 (assuming a user code of 1234)

3- Check Status (* *)

THE SECURITY SYSTEM IS OFF

2.10 PANIC

A panic signal can be initiated through the telephone. This will be similar to pressing the # and * keys at the same time from the keypad. The panic signal can be setup by your installer to be a silent or audible condition. Panic is active 24 hours a day whether the system is armed or disarmed.

To send a panic signal:

Press * then #

Listen for confirmation:

YOU HAVE PRESSED PANIC

NOTE: If your system has an audible panic condition, then the local alarm (siren) can be silenced by pressing * followed by your 4 digit user code.

2.11 DURESS

If your STAR-fone has been configured by your installer to contain an ambush or duress code then user number 6 has been dedicated for this purpose. An ambush code will arm or disarm the system and transmit

an emergency signal to the Central Station if you are forced to enter the premise.

To send a duress code:

Press * and User # 6 code (4 digits)

Example: * 6 5 4 3 (Assuming an ambush code of 6543)

Listen for confirmation:

THE SECURITY SYSTEM IS ON (OFF)

NOTE: If ambush capability has **not** been programmed, then USER #6 will react like any other user code.

2.12 AUXILIARY RELAY FUNCTIONS

If your system contains auxiliary relays, you will be able to turn on and off up to three additional functions on your premises, such as air conditioners, lights, jacuzzi, etc. Make sure to note which relay operates each of the functions you have selected on your zone ID. card. The Auxiliary Relay Function will turn the designated function ON if it is off, or OFF if it is ON.

To operate the Auxiliary Relay Function:

Press # and the **Relay Number (1-3)**

2.13 CHECK RELAY STATUS [# 0]

To check the status of the auxiliary relays:

Press #, then 0

THE HEATING SYSTEM IS OFF

Note: Your system may be programmed to include relay status messages each time you request system status (* *).

2.14 INTERNAL ACCESS

As an added layer of security, your STAR-fone **can** be programmed by your installer to require an access code for internal access.

Internal access means operation of your STAR-fone security system through a touch tone telephone located within your premises. If an internal access code has been defined then you will have to enter the

security code (up to **two** digits) before the commands previously described.

NOTE: If an internal access code has been defined, then this code (up to two digits) must be entered before each STAR-fone command. This code should not be confused with the user code.

2.15 EXTERNAL ACCESS

Your STAR-fone can be set up to allow "external access" which means you will be able to call your security system, and perform functions from any *touch-tone* telephone.

For external access:

Dial your telephone number and listen. After the designated number of rings (pre-set by your installer) the ringing will stop.

The system is now ready for your commands. Press the phone keys and enter the desired commands, similar to the on-premise commands. Status commands and confirmation messages will be given

EXTERNAL SECURITY ACCESS CODE (Optional)

NOTE: For added security your installer may pre-set a SECURITY ACCESS CODE (S.A.C) for external access. This will be up to 4 digits and can differ from the internal access code or your user code. This external access code would have to be entered **before** you can control the system from an external telephone. If your system includes an S.A.C. code, you must press * **then your S.A.C.** after the ringing stops, before you will be able to operate your system.

For example, if a security code of 9352 exists, then enter * 9352 after the ringing on your telephone stops. After entry of this code you can enter any of the telephone commands.

After (3) incorrect attempts to enter the S.A.C. the STAR-fone will disconnect the call.

2.16 CONVENIENCE SWITCH

There may be occasions when you want to override the STAR-fone so that the security system cannot be operated via your on-premise telephones. You may elect to do this, for example to avoid unauthorized tampering by curious guests.

A push button "CONVENIENCE SWITCH" has been provided on the side of the STAR-fone cabinet.

To shut off on-premise STAR-fone operation:

Press the Convenience switch. It will click into the "on" position. The tip of the switch will be red to indicate that the STAR-fone is bypassed on

premises. THIS DOES NOT CUT OFF THE **EXTERNAL ACCESS FUNCTION**

To restore the STAR-fone to full operation, press the Convenience Switch again. The red will disappear.

2.17 ANSWERING MACHINE

If you have a telephone answering machine, your installer can specially program your STAR-fone to allow you to use the **EXTERNAL ACCESS** feature even if when the answering machine is on. Then, just remember to start entering your code before the answering machine goes into the "recording Message" mode (in other words, before or during your recorded statement. When the STAR-fone hears you press the asterisk (*), it will take over.

NOTE: If you do not currently have an answering machine, but do decide to install one at a later date, remember to call your alarm installing company to reprogram your STAR-fone to operate with the answering machine.

2.18 LISTEN-IN

If your alarm technician has included the listen-in option in your system, you will use Auxiliary Relay #1 to turn on the speaker, as follows:

Pick up your telephone receiver

Press # 1

Two way communication is now possible between the telephone and speaker phone. Hanging up the telephone will disconnect the speaker.

2.19 IF AN ALARM OCCURS

If a **BURGLARY** zone is violated, and the system is armed, several things will happen:

A local alarm will sound

A burglary alarm message can be transmitted to your monitoring station

If you were to request a status report at this time, you might receive the following messages:

THE BURGLARY SOUND IS ON

ZONE 3 IS IN ALARM

The sounder will stop only after the timer has run out. To **TURN OFF THE ALARM** before that time, **DISARM THE SYSTEM**.

NOTE: Remember, after an alarm, you will have to **DISARM** twice to clear the system of the zones which were in alarm.

FIRE ALARM

If a **FIRE** alarm occurs:

A local alarm will sound

A fire alarm message will be transmitted to the monitoring station.

At this point a status request would yield:

THE FIRE SOUND IS ON

To turn off siren **DISARM** the system.

2.20 STAR-fone SYSTEM MESSAGES

When you check the status of your system, you may, on occasion, receive other messages in addition to the standard confirmation messages. These messages are described below:

THE AC IS NOT READY AND MUST BE CHECKED

The main electrical power supply is off, and the system is operating on battery power.

THE BATTERY IS IN TROUBLE, CALL FOR SERVICE

The back-up power supply (battery) is low. Call your installing company.

THE FIRE ZONE IS NOT READY, CALL FOR SERVICE

The Fire Zone circuit is not functioning properly. Call your installing company.

THE CENTRAL WAS NOT CALLED, PLEASE RESET

An attempt was made to send a signal to the central monitoring station, but it did not go through. Press * followed by your four digit user code to reset. Call your alarm company for a test of the communicator.

ZONE 3 IS NOT READY AND MUST BE RESET

An alarm occurred from a violation in zone 3. The system has already been disarmed [* , User code] to restore the system to its normal state. This feature is called alarm memory. The system will remember a violation until reset, so that you where the intrusion was if an alarm has occurred.

ZONE 3 IS NOT READY AND MUST BE CHECKED

This usually indicates that the zone such as a window or door is opened. If you receive this message after all of the items in that zone are secured, there may be a problem in the circuit. Open and re-close each protected opening in that zone. If you still receive the message, call for service. Until the zone is fixed, you can arm your security system by bypassing the zone in trouble.

2.21 USER PROGRAMMING

User codes can be programmed via the telephone (either on premises or remotely).

» NOTE: USER PROGRAMMING CAN ONLY BE PERFORMED WHEN THE SECURITY SYSTEM IS DISARMED

User programming can **only** be performed by user #1.

Procedure:

- 1- Press (#, #)
- 2- Enter the MASTER USER CODE (USER #1) (4 digits)
- 3- Enter the user # you wish to program (1 - 6) and listen for confirmation:

THE SECURITY COMPUTER IS READY FOR PROGRAM

- 4- Now enter the new four digit user code you want to program. After entry of the 4th digit the system will respond:

THE SECURITY COMPUTER IS PROGRAMMED

Example: Program user #3 with a code of 1056 [assuming a master user code of 4600]

PRESS ## 4 6 0 0 3 1 0 5 6

NOTE: This procedure can be used to create or change any user code. This includes user code #1 (master user code) or user #6 (possible ambush code).

2.22 DELETING A USER CODE

Users can be deleted from the system by telephone by the master user only (user #1).

Procedure:

- 1- Press (#, #)
- 2- Enter your MASTER USER code (User #1) (4 digits)
- 3- Enter the user # you wish to delete (2 - 6) and listen for confirmation:

THE SECURITY COMPUTER IS READY FOR PROGRAM

- 4- Press * to delete the user. The system will respond:

THE SECURITY COMPUTER IS PROGRAMMED

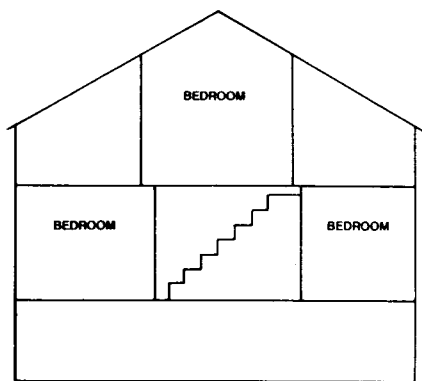
Example: Delete user #3.[assuming a master user code of 4600]

PRESS ## 4 6 0 0 3 *

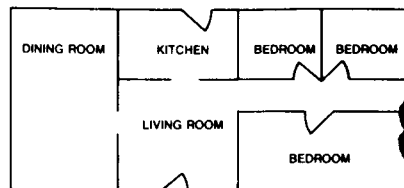
NOTE: User #1 code cannot be deleted.

3. INSTALLATION LAYOUT

Early warning fire detection is best achieved by the installation of fire detection equipment the location as follows;



Typical Smoke Detector Layout
(Proposed)



Smoke detector shall be located between the sleeping area and the rest of the house.

- NOTES:
 1. Designates smoke detectors
 2. Refer to N.F.P.A. #74 Appendix B-1.1 thru B-10

In homes with more than one sleeping area a smoke detector should be provided to protect each area.

Preparation of an evacuation plan is of prime importance in fire prevention. Establish a household emergency evacuation plan in the event of fire.

- 1- Evaluate possible escape routes from your home.
- 2- Select 2 escape routes from each room.
- 3- Rooms on the second floor should have a rope ladder. Be sure it will reach the ground.
- 4- Draw a rough sketch of your escape plan so everyone is familiar with it.
- 5- Practice your escape plan to assure that everyone knows what to do.
- 6- Establish a meeting place outside where your family is to report.
- Once you have evacuated the house do not return to a burning house.
- 7- Advise the local fire authority that you have installed a fire alarm system.
8. When the fire alarm signals, LEAVE IMMEDIATELY. Do not stop for belongings.
9. If a fire occurs, test the door. If hot, use your alternate route. If the door is cool, brace your shoulder against it and open it cautiously. Shut the door to help prevent the fire and smoke from spreading. Crawl through smoke, holding your breath.
10. Contact the Fire Department from a neighbor's telephone.
- 11 Everyone including neighbors should be familiar with the Fire and Burglary signals. In this installation the Fire Alarm signal is _____

The Burglary Alarm signal is _____ .

4. SYSTEM TESTING

This control unit was manufactured under rigid quality standards and complies with all UL requirements for its intended use. Maintenance is best performed by your installing company with trained service personnel.

Installing Company: _____
 Telephone Number: _____

It is recommended that you test your system once a week using the following procedure:

Note: If your STAR-fone system is monitored by a Central Station then contact them **prior** to performing this test.

- 1- Arm your security system.
- 2- Activate the system by opening a protected zone (example, window, or door).
- 3- Confirm that the alarm sounding device (bell or siren) activates. If your system is connected to a Central Station then the keypad will emit a ringback sound to confirm that the signal was received.
- 4- Disarm the system to silence the system and return to normal status.

BATTERY TEST

In order to test the backup battery the following procedure should be performed;

- 1- Remove the AC transformer from the AC outlet by removing the restraining screw which secures the transformer to the wall. (Note: the screw is not present in models sold in Canada).
- 2- Observe that the AC light goes off on the keypad.
- 3- Activate your alarm system using steps 1-4 listed above.
- 4- Replace the AC transformer to the AC outlet and secure using the retaining screw (Note: The retaining screw is not present in models sold in Canada).

The National Fire Protection Association publishes a standard for household fire warning equipment. N.F.P.A. #74. Further information can be obtained by contacting; NFPA Public Affairs Dept., Batterymarch Park, Quincy, MA 02269.

If you have any further questions about the operation of your system, call your installer.

OWNERS INFORMATION

NOTES:

NAME: _____

ADDRESS: _____

CITY, STATE, ZIP: _____

TELEPHONE NUMBER: _____

Date of Installation: _____

EMERGENCY NUMBERS: _____

CENTRAL STATION: _____

FIRE DEPARTMENT: _____

POLICE DEPARTMENT: _____

NEIGHBOR: _____

GAS/ELECTRIC DEPT: _____

DOCTOR: _____

HOSPITAL: _____

EMERGENCY _____

SERVICE INFORMATION: _____

ALARM INSTALLING COMPANY: _____

SUMMARY OF KEYPAD COMMANDS

<u>PROCEDURE</u>	<u>SEQUENCE</u>
ARM SYSTEM	[USER]
DISARM	[USER]
STAY	STAY [USER]
INSTANT	INSTANT [USER]
INSTANT STAY	INSTANT STAY [USER] or STAY INSTANT [USER]
BYPASS	BYPASS [USER] ZN
UNBYPASS	BYPASS [USER] ZN
USER DEFINITION	CODE [Master USER] [USER#] [USERID]
USER DELETION	CODE [Master User] [USER#] *

Where:

BYPASS	Key labeled BYPASS on keypad
INSTANT	Key labeled INSTANT on keypad
STAY	Key labeled STAY on keypad
CODE	Key labeled CODE on keypad
[USER]	Four digit user code
[Master User]	Master user code (User#1 four digit code)
[USER#]	User number being created or deleted
[USERID]	New four digit user code being created
ZN	Zone number (1-6)
*	Asterisk key on keypad

SUMMARY TELEPHONE ACCESS

<u>PROCEDURE</u>	<u>SEQUENCE</u>
STATUS	* *
ARM SYSTEM	* [USER]
STAY	# 7 [USER]
INSTANT	# 8 [USER]
INSTANT-STAY	# 9 [USER]
DISARM	* [USER]
BYPASS	# * [USER] ZN
UNBYPASS	# * [USER] ZN
PANIC	* #
DURESS	* [Duress Code]
RELAY STATUS	# 0
AUX. RELAY FUNCTION	# [Relay # 1 - 3]
USER PROGRAMMING	# # [Master User] [USER#] [USERID]
USER DELETION	# # [Master User] [USER#] *

WHERE:

*	Asterisk (*) key on telephone
#	Pound (#) key on telephone
[USER]	Four digit user code
ZN	Zone number (1-6)
[Master User]	Master user code (User#1 four digit code)
[USER#]	User number 1-6
[USERID]	New user code being created
[Duress Code]	Four digit duress code (User#6 OPTIONAL)

NOTES:

Internal access can require entry of a two digit code before each STAR-fone command.
External access can require entry of a four digit code before each STAR-fone command.