



Ranger 8980E User's Manual

CONTROL KEYPAD

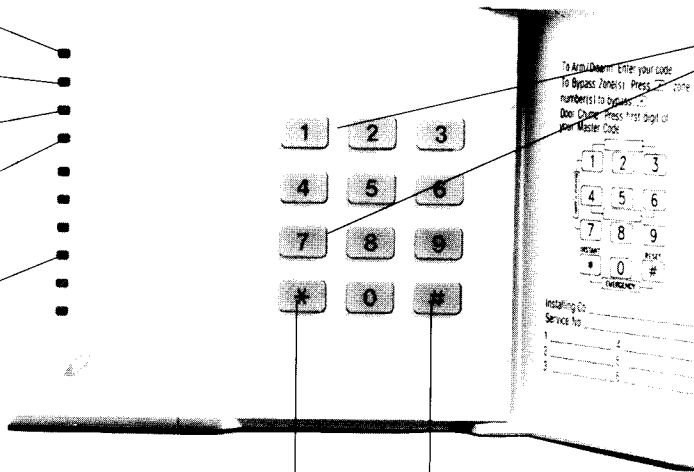
ARMED light indicates system is armed. Flashing ARMED light indicates previous alarm.

READY light indicates all zones are secure or bypassed, and system is ready. Ready light flashes for phone line fault.

INSTANT light indicates no entry/exit delay is present.

POWER light indicates AC power is present to your system. Power light flashes for low battery.

ZONE lights indicate status of zones. On means zone(s) bypassed, flashing means zone(s) open.



BELL TEST : If programmed by the installer, pressing these buttons simultaneously will activate a local test of the siren/bell. Enter your code to silence.

ZONE IDENTIFICATION LABEL

STAR button is used to remove or regain entry/exit delay. This button is also used during zone bypassing.

POUND button is to be used to reset Fire Zone or keypad entry.

PANIC/HOLD UP ALARM : If programmed by the installer, pressing the [*] and [#] simultaneously for one second will activate a panic/hold up transmission, and sound the local siren/bell.

Installing/Service Company _____

For Service Call _____

SPECIAL CODES

Master Code _____ Duress Code _____

AUXILIARY CODES

"Quick Arm" _____ " Chime" _____ 08 _____

02 _____ 09 _____

03 _____ 10 _____

04 _____ 11 _____

05 _____ 12 _____

06 _____ 13 _____

07 _____ 14 _____

SYSTEM NOTES

Exit Delay Time _____ Secondary Exit Delay Time _____

Entry Delay Time _____ Secondary Entry Delay Time _____

Fire Alarm Sound (check one) Steady Siren Pulsing Bell

Burglar Alarm Sound (check one) Yelp Siren Steady Bell

ZONE DESCRIPTIONS - ✓ CHECK FIRE ZONES

ZONE 1 _____

ZONE 2 _____

ZONE 3 _____

ZONE 4 _____

ZONE 5 _____

ZONE 6 _____

ZONE 7 _____

ZONE 8 _____

THIS MANUAL IS FURNISHED TO HELP YOU UNDERSTAND YOUR SECURITY SYSTEM AND BECOME PROFICIENT IN ITS OPERATION. ALL USERS OF YOUR SECURITY SYSTEM SHOULD READ AND FOLLOW THE INSTRUCTIONS AND PRECAUTIONS IN THIS BOOKLET. FAILURE TO DO SO COULD RESULT IN THE SECURITY SYSTEM NOT WORKING PROPERLY. THIS BOOKLET SHOULD BE KEPT IN AN ACCESSIBLE LOCATION FOR THE LIFE OF THE SECURITY SYSTEM. IF YOU DO NOT UNDERSTAND ANY PART OF THIS MANUAL YOU SHOULD NOTIFY YOUR INSTALLING COMPANY AND ASK FOR THAT SECTION OF THE MANUAL TO BE EXPLAINED FULLY.

The SECURITY CONTROL CENTER is turned on (ARMED) and off (DISARMED) by entering a 4 digit code into the Keypad Control,, which is similar to a telephone keypad. The Keypad Control includes 10 indicator lights and a built-in electronic sounder. These provide specific information relating to the status of the security system which is described in this booklet. Understanding what the lights and sounds mean will help you easily operate your system.

SO REMEMBER, READ THE ENTIRE MANUAL, AND, IF POSSIBLE PRACTICE ON THE KEYPAD CONTROL WHILE YOUR PROFESSIONAL INSTALLER IS AT YOUR BUILDING. IF YOU HAVE ANY QUESTIONS ASK YOUR INSTALLING COMPANY.

PLEASE KEEP IN MIND THAT THE LEVEL OF SECURITY YOU WILL OBTAIN WITH THIS SYSTEM RELATES SPECIFICALLY WITH TWO MAJOR FACTORS:

1. The quantity, quality, and placement of security devices attached to this system.
2. The knowledge you have of the security system and how that knowledge is utilized in a weekly test of the complete system.

YOU SHOULD BE AWARE OF THE FOLLOWING FACTS AND USE THEM WHEN PREPARING A SAFETY/SECURITY PLAN FOR YOUR HOME/BUSINESS.

1. Your security system is an electronic device and is subject to failure or malfunction. Do not rely on it as your single source of security.
2. Your system should be tested weekly.
3. Your system will not work without power.
4. Warning devices will need to be loud enough, wired correctly, and properly placed to provide notification of an alarm event.
5. Smoke and heat detectors may not detect heat and smoke in all situations.
6. Use qualified security professionals to select, install, and maintain your security system.
7. It may be possible to arm the security system without the backup battery connected. Your periodic test should be done with A.C. Power removed to verify the battery is connected and adequately charged.
8. Care should be taken to plug in and properly restrain the A.C. Transformer after testing.

PLEASE READ THIS ENTIRE BOOKLET CAREFULLY BEFORE OPERATING YOUR SECURITY CONTROL SYSTEM. IF YOU DO NOT UNDERSTAND ANY PORTION OF THIS MANUAL, OR IF YOU HAVE ANY QUESTIONS ABOUT YOUR SYSTEM, CONTACT THE INSTALLING COMPANY LISTED ON PAGE 1 OF THIS BOOKLET.

HOW TO ARM YOUR SECURITY SYSTEM

To Arm the security system, close all of the protected doors and windows. The green "READY" light on the keypad control will be illuminated when all of the protected zones and sensors are secure. If any of the zones are bypassed, a sensor in that zone can be violated without affecting the "READY" light. The security system will not arm if the "READY" light is not illuminated unless "FORCE ARMING" has been enabled (see "FORCE ARMING" page 4). With the "READY" light on, you may arm the security system with your Master Code or one of the auxiliary codes. Each time a key is pressed on the keypad control, a short tone (beep) will sound. If the keypad beeps three times after a code entry, it is an indication that the code has not been accepted. Press the [#] key (reset) and re-enter a valid code. If the keypad control beeps continuously after code entry, it is an indication that: (1) the "POWER" light is off, meaning there is no AC power to your system; (2) a faulted fire zone; or (3) a faulted phone monitor. The keypad sounder can be silenced by re-entering your four digit code. If the "POWER" light is off, you should restore power to the system if possible. If the "Ready" light is flashing, a telephone line fault has been detected. If you are unable to correct the above conditions, you should contact the installing company listed on page 1 of this booklet for service. When the security system has accepted a valid code, the red "ARMED" light will illuminate indicating that the system has been turned on. If you choose to leave the protected area, you must exit through a designated exit door within the exit delay time noted on page 1. If you choose to stay within the protected area, insure that all interior zones which may be tripped by your movement are bypassed.

NOTE: If the exit door is open when the exit delay expires, the siren will sound, and the entry delay will begin. If a valid code is not entered prior to the expiration of the entry delay, an alarm report will be transmitted to the monitoring station if the system is monitored. Entering a valid code during the entry delay will disarm the system, silence the siren, and keep an alarm report from being transmitted.

HOW TO DISARM YOUR SECURITY SYSTEM

When you enter the protected area through one of the designated entry/exit doors, the keypad control will sound a continuous tone (beep) for the duration of the entry delay time, or until you enter a valid code. After a valid code has been entered, the red "ARMED" light will turn off, and the tone will stop. The security system is now DISARMED. If a valid code is not entered before the end of the entry delay time, an alarm will occur. (NOTE: IF THE RED "ARMED" LIGHT IS FLASHING DURING THE ENTRY DELAY, THE ALARM SYSTEM HAS BEEN ACTIVATED IN YOUR ABSENCE. LEAVE THE BUILDING IMMEDIATELY AND CALL YOUR ALARM COMPANY AND/OR THE POLICE FROM A SAFE LOCATION.)

HOW TO BYPASS ZONES

When zones are open or unsecured, their corresponding LEDs will flash. To bypass any of the zones, press [*], zone number(s) to be bypassed, and [*]. When bypassed, corresponding zone LEDs will be on steady. Zones cannot be bypassed while the control is in the armed state. Upon disarming, all bypassed zones will be unbypassed. As bypassed zones are not protected, the bypass procedure should only be given to authorized persons.

QUICK-ARM FEATURE

If checked, your security system has a "QUICK ARM" code programmed. This feature will allow you to arm the security system by pressing one, pre-designated key on the keypad control. This "QUICK ARM" code is for **ARMING ONLY**, and will not disarm the security system. This makes it ideal for a maid code, babysitter code, etc. This code can only be programmed and/or changed by your installing company.

AUTOMATIC BYPASS OPTION

If checked, the "AUTOMATIC BYPASS" option has been selected by your installing company. With this feature enabled, all interior zones will automatically bypass if you "ARM" your security system and do not leave through a designated entry/exit door. The "AUTOMATIC BYPASS" will occur at the end of the exit delay time. At this time, all bypassed "ZONE" lights will become illuminated. With the interior zones bypassed, occupants are allowed the freedom of movement inside of the Home/Business while the security system is "ARMED". If enabled by the installer, interior zones that have bypassed automatically can be unbypassed by pressing [X] - [*] (X=the first digit of the Master Code). Check with the installing company to see if your system has this option.

INSTANT / DELAY OPTION

If checked, the "INSTANT" option has been selected by your installing company. With this feature enabled, if you do not wish to have a delay on your entry/exit doors, this can be accomplished by pressing the [*] key on your keypad while the system is "ARMED". At this time, the "INSTANT" light will illuminate and there will be no entry delay when the entry/exit doors are opened. Any time the "INSTANT" light is on and the exit delay has expired, the opening of an entry/exit door will produce an immediate alarm, making this feature ideal when a high level of security is desired, and no authorized entries are anticipated. By pressing the [*] key again, the "INSTANT" light will turn off, and an entry delay will be present on designated entry/exit doors.

NOTE: Your installing company may have programmed the "INSTANT" option to occur in conjunction with the "AUTOMATIC BYPASS" feature. In this case, the "INSTANT" light and the bypassed "ZONE" lights will become illuminated at the end of the exit delay. If this occurs, you still have the ability to turn the "INSTANT" feature off, and/or on by pressing the [*] key.

GROUP BYPASS OPTION

If checked, the "GROUP BYPASS" option has been selected by your installing company. If you wish to bypass all zones designated as "GROUP BYPASS" zones, you may do so by entering [*]-[9]-[*] while the system is disarmed. Once these zones have been bypassed, they will remain bypassed until the system is armed and disarmed.

FORCE ARMING OPTION

If checked, the "FORCE ARMING" option has been selected by your installing company. Force arming allows the system to be armed without a green "READY" light illuminated. Any zones that restore prior to the end of the exit delay will become active in the system, while those zones that do not restore prior to the end of the exit delay will become bypassed zones. Caution: If this feature is selected, an intrusion through one of the bypassed zones will not be detected.

AUTOMATIC ARMING OPTION

If checked, the "Automatic Arming" option has been selected by your installing company. This feature is used to make your system automatically arm itself at a designated time of day, if it is not already armed. The keypad will sound a continuous beeping tone for a 50 second time frame before automatically arming. If a valid code is entered during this time frame, the system will not automatically arm. When automatic arming occurs, all zones that are not secure, will become bypassed.

THE CHIME FEATURE

If checked, your security system will operate in the "CHIME" mode, allowing the monitoring of pre-designated zones while the security system is not armed. While in the "CHIME" mode, the opening of any of these zones will produce a 1 second beep from the keypad control. To activate this feature, press the "CHIME" digit which is the first digit of the Master Code. Five seconds after pressing the "CHIME" digit, a one second tone will occur indicating that this feature has been activated. Repeat this procedure to turn the "CHIME" feature off.

KEYPAD ACTIVATED PANIC/HOLD-UP ALARM

If checked, this feature has been selected by your installing company. If so, when the star [*] and pound [#] keys are pressed at the same time for one second, a local audible alarm will sound. If your system is connected to a monitoring center, an emergency report could be transmitted to that center. These keys should only be pressed in an emergency situation requiring immediate response by law enforcement personnel.

PLEASE NOTE: Some Panic/Hold-Up alarms are programmed to be silent at the protected site while reporting an alarm to the monitoring center. Check with your installing company to determine how your security system will respond to the Panic/Hold-Up activation.

KEYPAD ACTIVATED FIRE ALARM

If checked, this feature has been selected by your installing company. If so, you can activate the Fire alarm by pressing the one [1] and three [3] keys at the same time for one second. If your system is connected to a monitoring center, an emergency report could be sent to that center. These keys should only be pressed in an emergency situation requiring response by fire department personnel.

KEYPAD ACTIVATED AUXILIARY ALARM

If checked, this feature has been selected by your installing company. If so, you can activate the auxiliary alarm by pressing the four [4] and six [6] keys at the same time for one second. If your system is connected to a monitoring center, an emergency report could be sent to that center. These keys should only be pressed in an emergency situation requiring response by emergency personnel. When the "4" and "6" are pressed together, the keypad will start to beep until a code is entered.

TELEPHONE LINE MONITOR

If checked, your installing company has selected the TELEPHONE LINE MONITOR which will monitor your telephone line that links your security system to the monitoring station. When selected, the loss of your telephone line will give either immediate, or delayed notification by sounding the siren and/or keypad sounder. Check with the installing company listed on page 1 to find out if notification will be delayed or immediate, and what kind of sound will be created in case of a telephone line fault.

DURESS CODE

If checked, your security system has a "DURESS CODE" option. If so, this code may be programmed to send a special message to the central monitoring station if you are forced to arm or disarm your security system against your will. Check with your Installing/Service company to see if this option has been enabled for your system.

FIRE ZONE

If checked, your system has zones designated as "FIRE" zones. When this option is selected, and approved heat or smoke detectors are attached to these selected zones, a Fire alarm sound can be initiated from the security system. You should familiarize yourself and your family or staff with this sound (see page 1, Fire Alarm sound) and follow an evacuation plan if this "FIRE" alarm sound is heard. (see page 8 for assistance in formulating an evacuation plan). To silence the audible "FIRE" alarm sound, enter a valid code. To reset the zone LEDs designated as "FIRE" zones and /or smoke detectors, press the [#] key (reset) on the keypad. After 10 seconds, the zone LEDs designated as "FIRE" zones should extinguish, and the light on the affected smoke detector should go out. If you are unable to reset the LEDs for designated "FIRE" zones or smoke detectors after all smoke has cleared, you should immediately call the service phone number listed on page 1 of this booklet.

PROGRAMMING ARM/DISARM CODES

The security system can be armed and disarmed by the Master code (User Code #1), and up to 13 auxiliary codes. All codes must have 4 digits. These Auxiliary codes are individually numbered from 2 to 14 (NOTE: If your system is programmed for a DURESS code on page 5, user code #7 will not be available). If Auxiliary codes are desired, they must be programmed individually. Codes 2 thru 7 can be changed by the procedures described below, while codes 8 thru 14 can only be changed by your installing company. Only persons knowing the master code can assign or change auxiliary codes 2 thru 7 (See programming Auxiliary codes below).

CHANGING THE MASTER CODE - The Master Code is user code #1, and must be programmed by referring to it as code #1. For example, if the Master code is [1]-[2]-[3]-[4], and you want to change it to [5]-[3]-[4]-[2], the programming sequence would be as follows: Press [*]-[1]-[#], (this enters programming for user #1) then enter the current Master Code of [1]-[2]-[3]-[4], now press [*]-[1]-[#] to verify user #1 programming, now enter your new Master Code of [5]-[3]-[4]-[2], and exit programming with [*]-[1]-[#]. The entire sequence would consist of pressing 17 keys as follows:

[*]-[1]-[#] - [1]-[2]-[3]-[4] - [*]-[1]-[#] - [5]-[3]-[4]-[2] - [*]-[1]-[#]

PROGRAMMING AUXILIARY CODES 2 THRU 7- In order to program Auxiliary Codes 2 thru 7 you must know the Master code. As stated earlier, each auxiliary code has its own unique number from #2, thru #7 and must be referred to by its number. It is programmed much like the Master Code. For example, to program Auxiliary user code #2, the sequence would be as follows:

[*]-[2]-[#] - [1]-[2]-[3]-[4] - [*]-[2]-[#] - []-[]-[]-[] - [*]-[2]-[#]
(New Code)

REMOVING AUXILIARY CODES - To remove an Auxiliary user code, use the sequence above, and program the new code as the []-[]-[]-[]
(Master Code)

RESETTING YOUR SECURITY CONTROL CENTER

In the event of a system malfunction in the Security Control Center, press the [#] (reset) key on the keypad control. This should reset the code sequence and restore normal operation. If the problem persists, call the service number located on page 1 of this booklet for service.

AUDIBLE ALARM SOUNDS

FIRE: Steady siren, pulsing bell (see page 1) or beeping keypad.

INTRUSION & PANIC: Yelp siren, steady bell (see page 1) or beeping keypad.

KEYPAD CONTROL LIGHT INDICATORS

ARMED RED: On when system is armed; off otherwise. Flashes for alarm memory if alarm was activated during arming cycle.

READY GREEN: On when all zones are secure and/or Bypassed and the system is ready to arm; off otherwise. Flashes for telephone line fault.

INSTANT RED: On when the entry/exit zones are instant; off otherwise.

POWER RED: On when AC power is on; off otherwise. Blinks when the system standby battery is low.

ZONES YELLOW: Flashing means unsecured. Steady means bypassed. Off means secure.

KEYPAD CONTROL TONES (BEEPS)

A sounder is built into the keypad and may sound for any of the following reasons:

- Beeps for all keypresses.
- Sounds a continuous tone during the Entry delay time.
- Pulses when a day zone is violated while the system is disarmed.
- Pulses when a FIRE zone has a trouble condition.
- Pulses when the armed status changes and the AC power is off.
- Beeps 3 times for trying to arm with the "READY" light off, if "FORCE ARMING" has not been selected.
- Beeps 1 second for the "CHIME" feature.
- Beeps 1 second at the end of the exit delay.
- Beeps to indicate telephone line fault if selected.
- Beeps 1 long beep followed by 3 short beeps to alert you that there are only ten seconds remaining in the exit delay.

When pulsing, the keypad sounder may be silenced by entering a valid code. The arm/disarm state of your system will not change when entering a code to silence a pulsing keypad sounder.

EMERGENCY EVACUATION PLANS

An emergency evacuation plan should be established for an actual fire alarm condition. For example, the following steps are recommended by the National Fire Protection Association and can be used as a guide in establishing an evacuation plan for your building.

Draw up a floor plan of your home. Show windows, doors, stairs, and rooftops that can be used for escape. Indicate each occupant's escape routes. Always keep these routes free from obstruction.

Determine two means of escape from each room. One will be the normal exit from the building. The other may be a window that opens easily. An escape ladder may have to be located near the window if there is a long drop to the ground below.

Set a meeting place outdoors for a headcount of the building occupants.

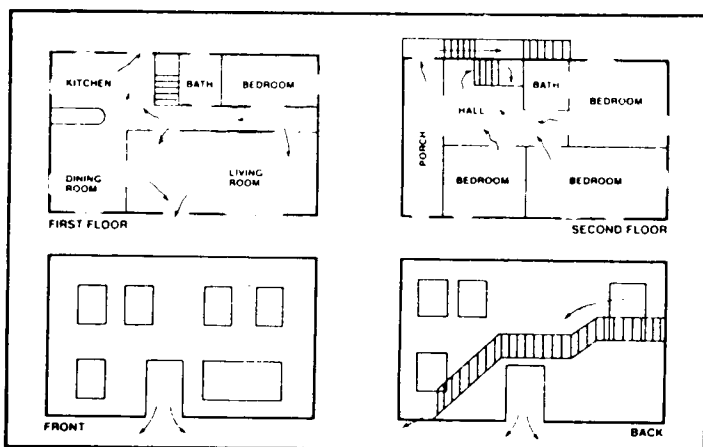
Practice escape procedures. In a home, sleep with bedroom door closed; this will increase your escape time. If you suspect fire, test the door for heat. If you think it is safe, brace your shoulder against the door and open it cautiously. Be ready to slam the door if smoke or heat rush in. Practice escaping to the outdoors and meeting in an assigned spot. Call the Fire Department from a neighbor's phone.

NOTE: After the installation of your Security System has been completed, notify your local Fire and Police Departments to give them your name and address for their records.

Early warning fire detection is best achieved by the installation of fire detection equipment in all rooms.

This equipment should be installed in accordance with the National Fire Protection Association's Standard 74. For additional information write the National Fire Protection Association, Batterymarch Park, Quincy, MA 02269.

The following are examples of evacuation plans. A plan unique to your home or business should be drawn and memorized by each occupant.



TESTING YOUR SECURITY SYSTEM

There are several tests you should perform on a periodic basis (at least once a week) to insure that your Security System is functioning properly.

- Enable the "CHIME" Feature and open all protected windows and doors. The Keypad Control should sound (beep) for each device and the appropriate yellow zone light should blink.
- Walk into all areas protected by motion detection devices while someone observes the Keypad Control. The appropriate yellow zone light should blink for each sensor tested.
- If your system has a "FIRE" Zone, the Smoke or Heat detectors should be tested at least monthly. If your Security System is monitored by a Central Monitoring Station, always call before to let them know that you are about to conduct a test of the fire detection system. Always call after the test to ask for results and to put your fire detection system back into service.
- If the Siren/Bell test option has been selected by your installing company, you may activate the siren/bell by pressing the one [1] and the seven [7] keys at the same time for one second. To silence the siren/bell, enter your 4 digit Master or Auxiliary Code.

If any of the above tests are not successful or the results unclear, contact your service company at the phone number listed on page 1 of this booklet.



Caddx Controls, Inc.

**8980E USER'S MANUAL
8980EUE97 REV E (8-1-97)**

